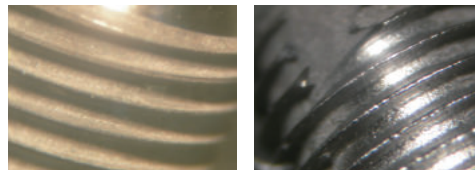
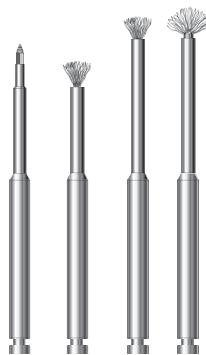




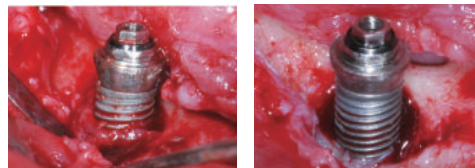
NiTi Brush for peri-implantitis

Make rough surface into machined smooth surface
Remove everything except the original shape of implant



Rough Surface

Machined Surface

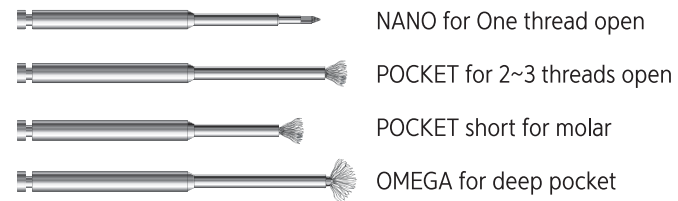


Mechanical Debridement of Implant Surface

Look for distributors !!!

Selection of NiTi Brush for peri-implantitis

Depend on the case, select one model of NiTi Brush as below.



Sterile before use(134°C/15min)
Using “implant motor”, RPM 600~1,200
Single time use only

Save Implant & Create New Patient

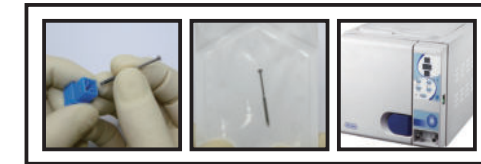
Protocol of the NiTi Brush for peri-implantitis

1. Check up the periimplantitis.



Check up the periimplantitis using probe and possible any solution.

2. Sterile the NiTi Brush.



Before use, sterile the NiTi Brush using sterile pouch & autoclave
134 °C / 15 minutes

3. Attach the NiTi Brush to handpiece.



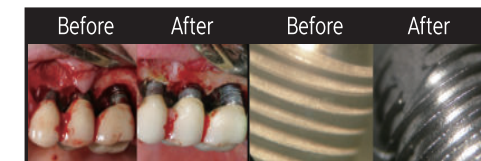
Attach the NiTi Brush to (20:1) implant handpiece
Prepare external saline irrigation

4. Brushing – mechanical treatment.



implant motor, RPM 600~1,200
Rotate the NiTiBrush
Remove osseous defect of plaque calculus or any other materials
Extensive external sterile saline

5. Check up the mechanical debridement by naked eyes.



During brushing, you can see
The shade of implant surface changed
into shiny & machined surface